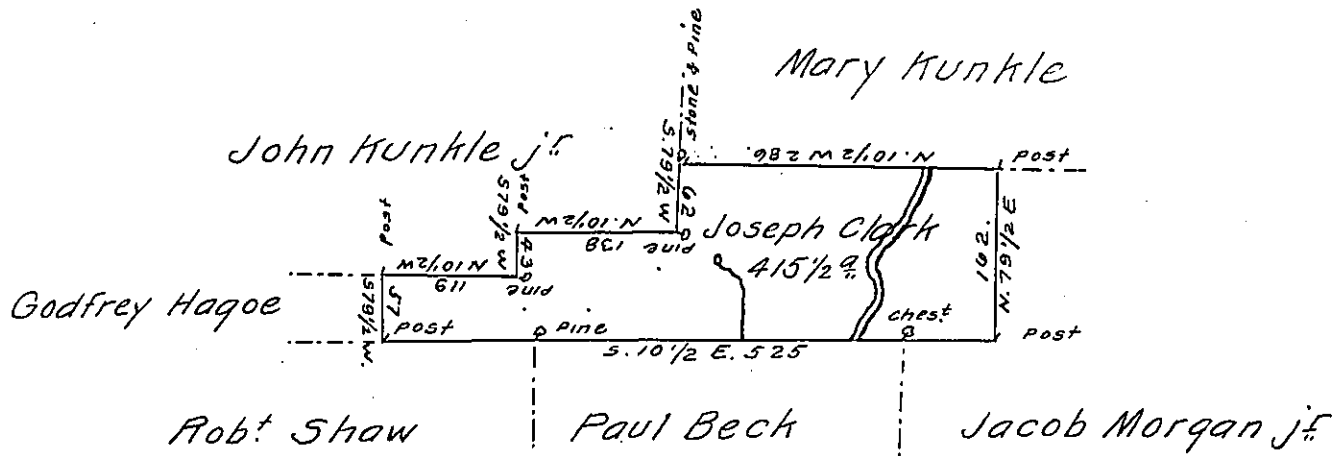


Hazle
Luzerne

286
138
119
523



A Draft of a tract of land Called — Situate on the Waters of Cata-
 wissey Creek in the County of Northum^d or Northampⁿ Containing
 four Hundred and fifteen acres 1/2 & allow^{ce} Surveyed for Joseph
 Clark the 17th day of October 1793. by Virtue of a Warrant dated
 the 10th day of July 1793.

to

Daniel Brodhead Esq^r } by W^m Gray D.S.
 Surv^r Gen^l }

IN TESTIMONY that the above is a copy of the original remaining on file in
 the Department of Internal Affairs of Pennsylvania, made
 conformably to an Act of Assembly approved the 16th day of
 February, 1833, I have hereunto set my Hand and caused
 the Seal of said Department to be affixed at Harrisburg,
 this twenty-sixth day of September 1910.

Henry Houck
 Secretary of Internal Affairs.